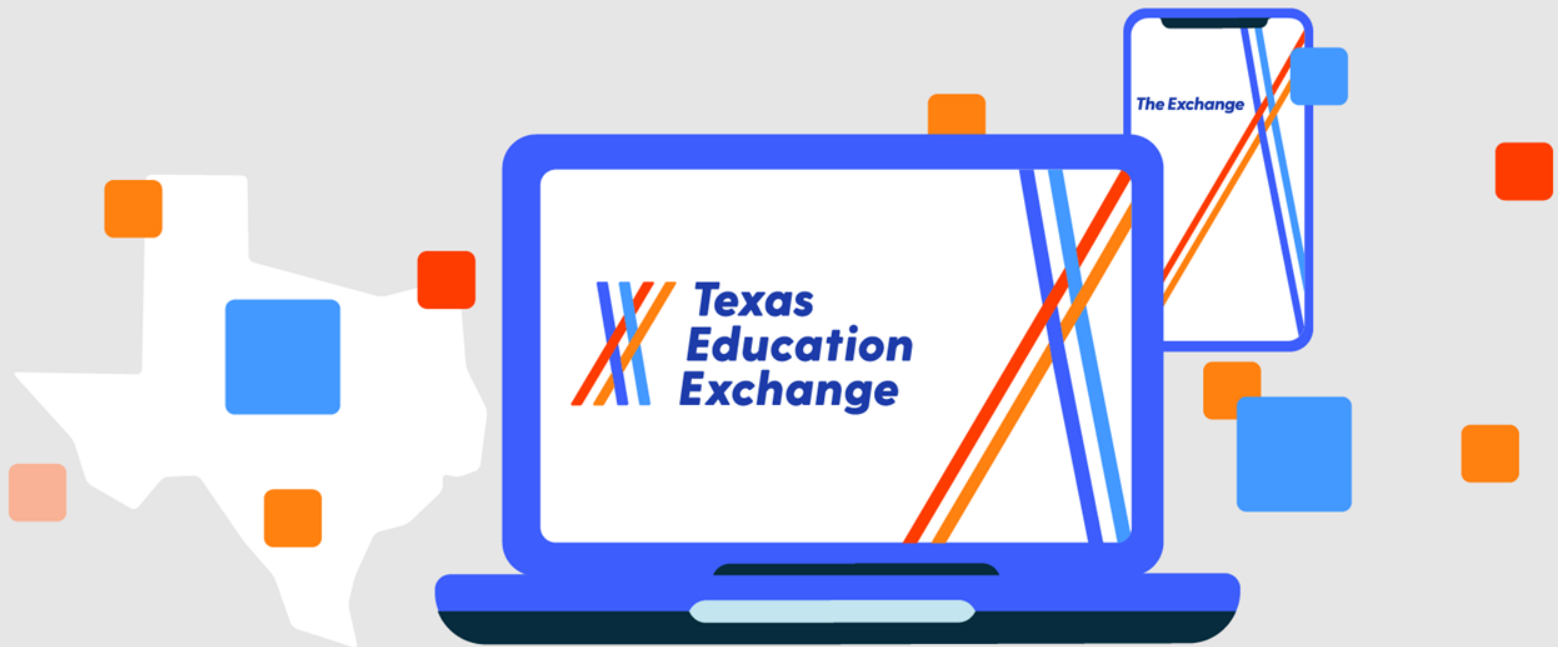


Get to Know the Texas Education Exchange

February 23, 2023



DATA INSIGHTS DRIVEN BY COMMUNITY



Texas is building for the future

The Texas Education Exchange is a new data solution that delivers real-time insights to educators.

The Exchange provides a way for districts across the state to easily access the tools they need to bolster student success.

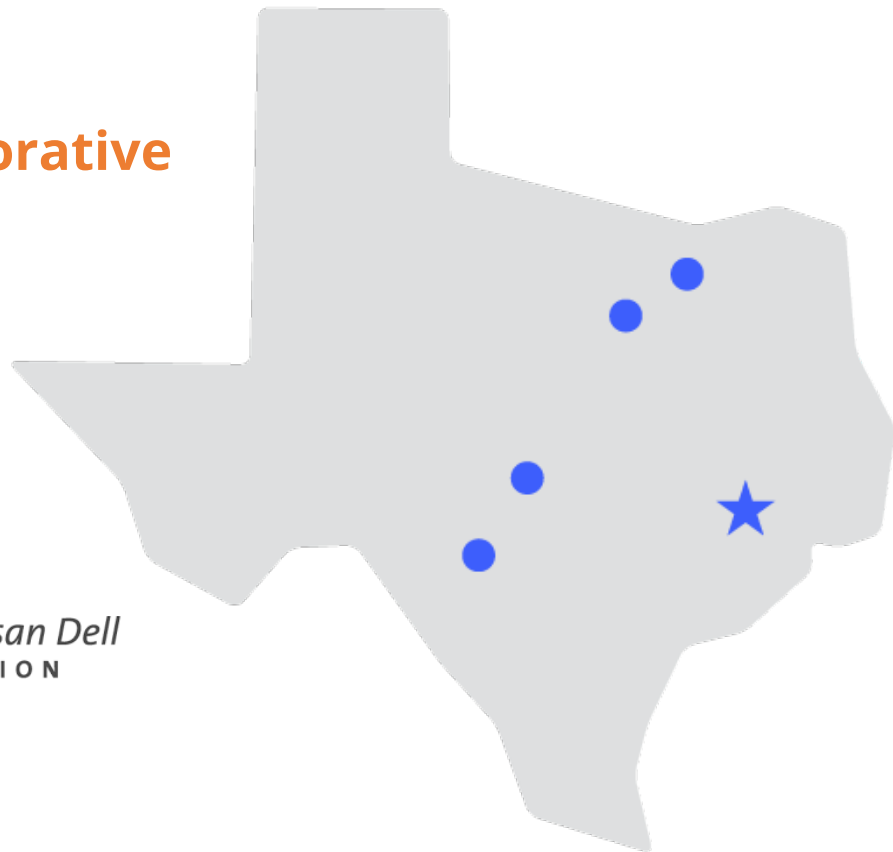




The Exchange is made *for* Texas *by* Texas

Five founding regions lead the
Texas Education Exchange Collaborative

The Texas Education Agency
provides financial and thought
partnership to ensure success



Michael & Susan Dell
FOUNDATION

Educators miss opportunities to positively impact students due to lack of timely, relevant information





Educators expressed frustration with accessing timely and relevant data



School Leaders

Administrators

Teachers

ESC Leaders

Coaches

**1,000+ Educators
across**

20 Education Service Centers

District Leaders

Counselors

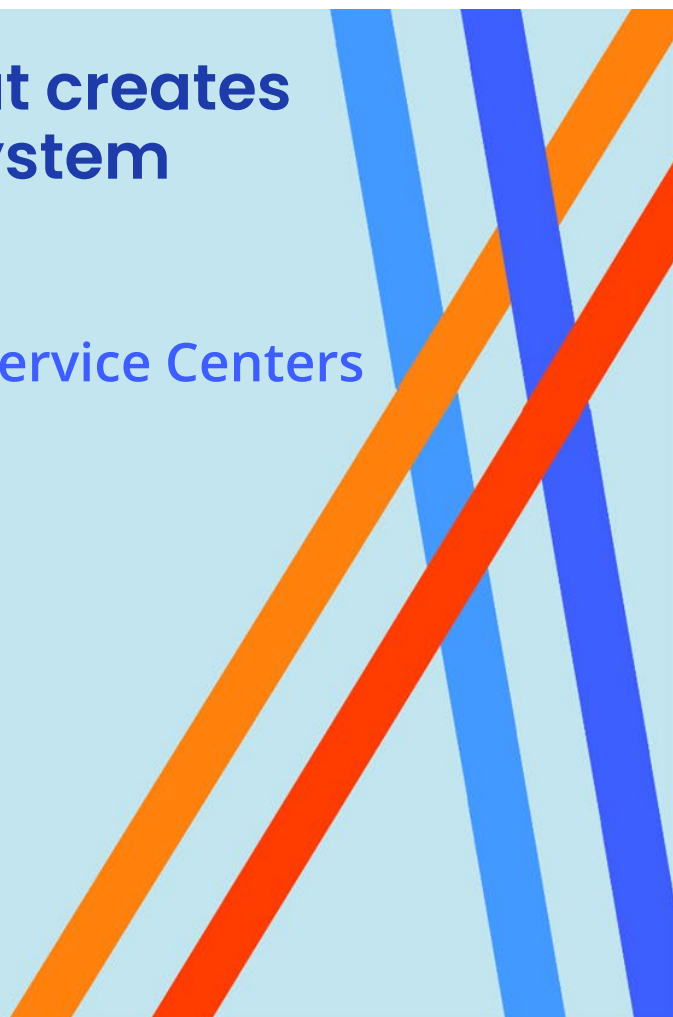
Registrars

Technology Leaders

Curriculum Specialists



The Exchange is a data solution that creates connections in a fragmented ecosystem

- Made and supported by Texas Education Service Centers
 - Flexible and customizable
 - Strong foundation for innovative idea
 - Building for the future
- 

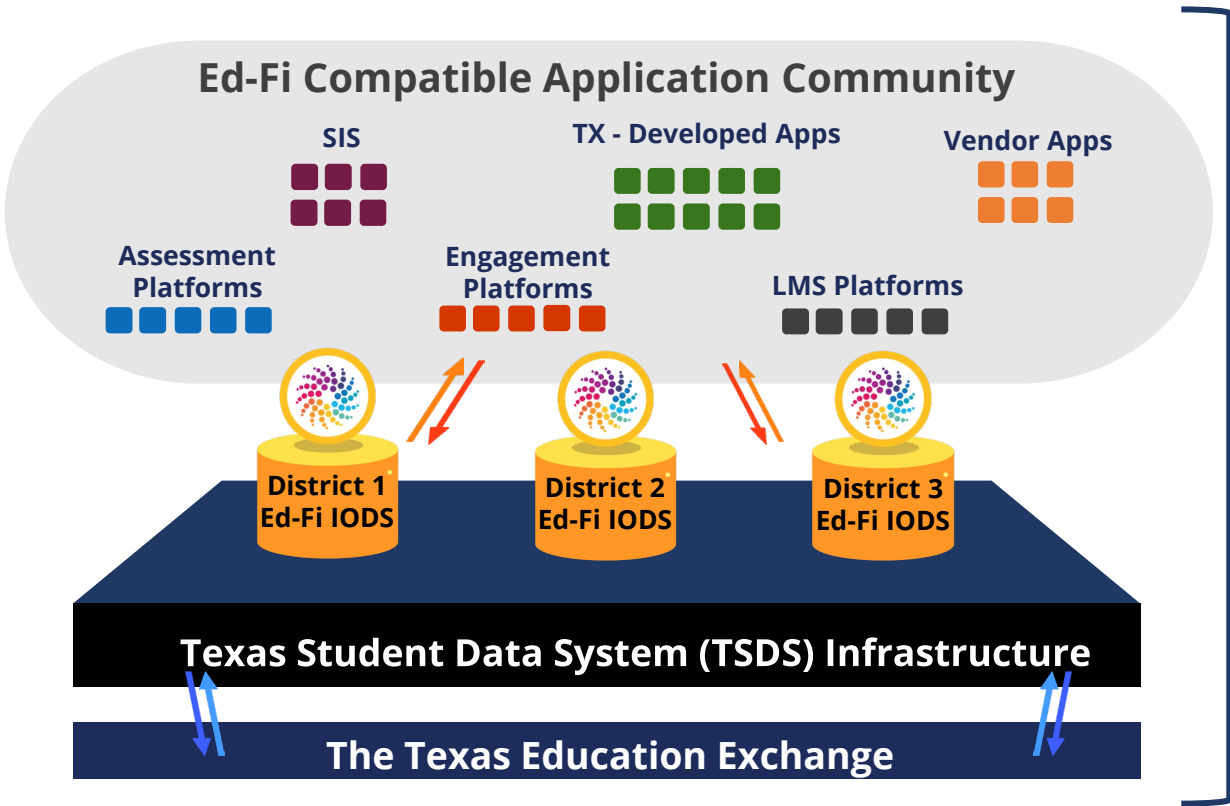


The Exchange leverages the Ed-Fi Data Standard



- The Exchange is working toward expanding a **common language across Texas**.
- Ed-Fi is a **data standard**, a set of rules that establishes a **unified structure** for educational data.
- Ed-Fi is **free** and **open source**.
- Ed-Fi provides a **user support community**

The Texas Education Agency is modernizing data connections through its Texas Student Data System



➔ Educator Impact

Education data are included in a **single location** and can easily flow among data systems, limiting time spent on reporting.



Early use cases address Texas educators' biggest challenges

Challenges

Outdated and erroneous data negatively impacts funding

Educators spend hours logging into multiple systems to access data and do not have a clear, holistic view of student progress

Countless hours spent manually rostering lead to errors and delays

Teachers wait weeks to receive essential data for transferring students, delaying differentiated instruction

Solutions



ODS Health Check



Single pane view of student programs and services

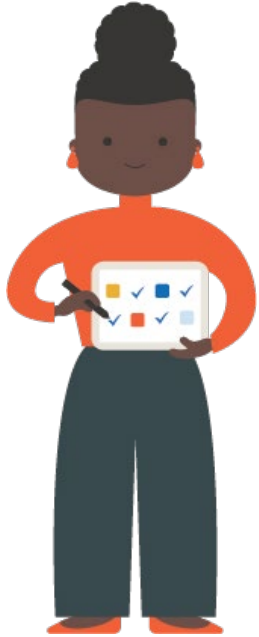


Roster synchronization and integration across applications



Portable Student Records

A single pane view of student information benefits teachers



“We can have daily conversations about individual students or large groups of student populations.”

- Conduct discussions with parents using tools to visualize student data
- Understand student performance and needs
- Easily access holistic student data
- Collaborate with teachers to strengthen and support a strong campus data culture

The Exchange will connect districts with impactful tools quickly

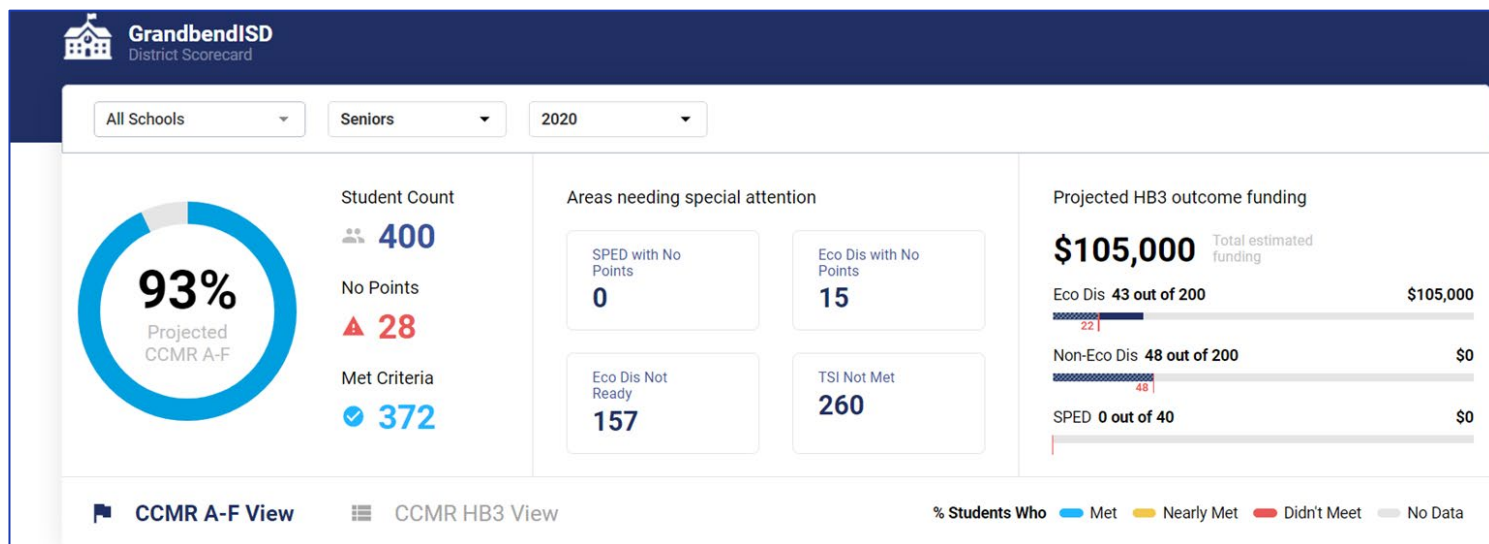
CCMR Insights will be available this Fall on The Exchange

- Designed to keep high school students on track for Career, College, and Military Readiness
- Connects seamlessly with an LEA's SIS via Ed-Fi
- Helps schools predict outcomes bonus funding to inform plans to reinvest those dollars in CCMR programs
- Hosted and supported by Region 10 ESC
- ROI can pay for Insights and Exchange software



CCMRinsights
POWERED BY REGION 10 ESC AND ED-FI

CCMR Insights dashboards accentuate key student insights



"It provides the insight to know where our students are being successful and allows us to see their gaps."

-Mesquite ISD Leader

The Exchange cultivates, integrates & governs applications across software providers

The Texas Education Exchange



District
Implementation
Support



Exchange Developed
Apps and Marketplace
(For optional district use)



Software Provider
Integration

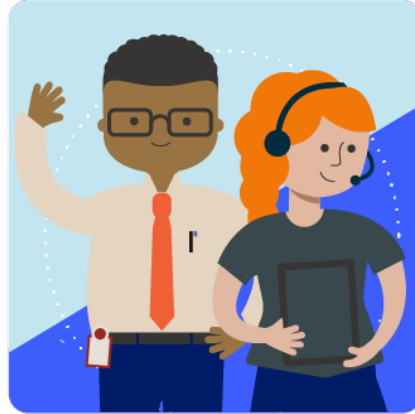


Community Building
Platform

The Exchange connects districts, regions and the state in new and innovative ways



More efficient data standards alignment & integration will save time & resources.



Wraparound services, enhancing data utilization, analysis & security.



Access to **best-cost options** from software providers for tools that meet their needs.

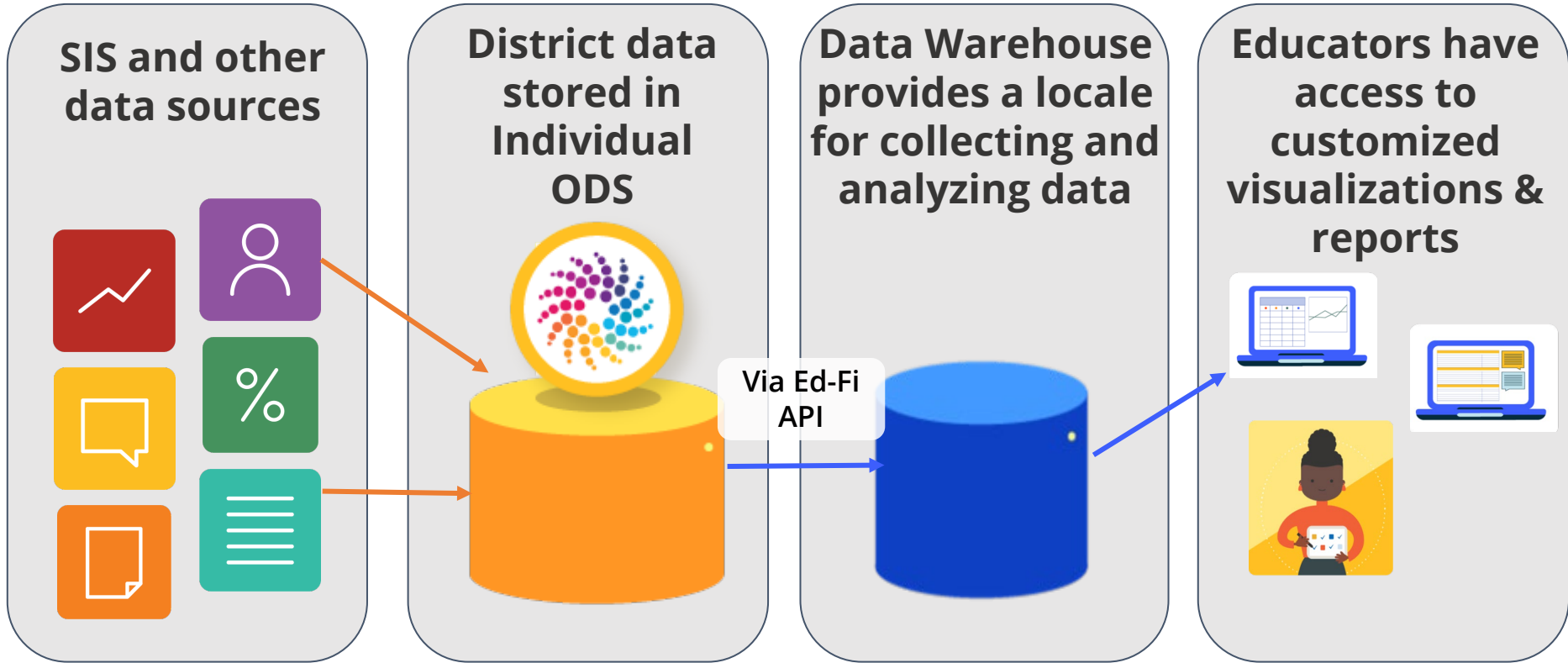


Cybersecurity efforts at the state and local level underpin The Exchange



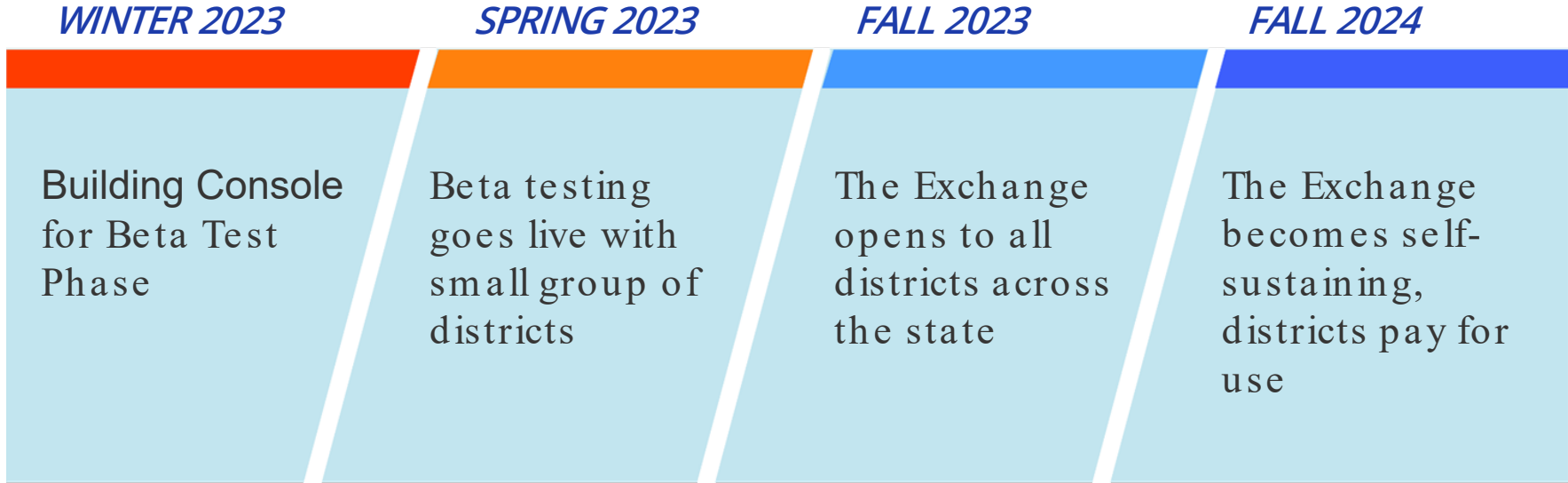
- Ed-Fi technology protects **data confidentiality** and **integrity**.
- Data remains entirely **under the ownership of its respective district** who has decision-making power for data access and use.
- Data will reside in a district's **IODS**, replacing antiquated storage methods.
- Data will transfer among applications in a “**closed system**” reducing security risks via manual uploads.

Beta High Level Architecture





We have an ambitious timeline for The Exchange



Educators can improve student success with data that works *for* them

- ✓ Allows for **timely access to relevant data.**
- ✓ Provides educators a **snapshot of how students are performing** and what their needs may be in the classroom.
- ✓ With relevant data flowing between systems and timely information, educators can add time back to their day to **focus on student outcomes.**





Want to learn more about The Exchange?

Visit us online and sign up to receive updates
txedexchange.net

And sign up for [Ed-Fi 101](#) with the Ed-Fi
Alliance to learn how it can impact your
schools





Questions?

Jerry Lashley
Director
jerry.lashley@esc4.net

