



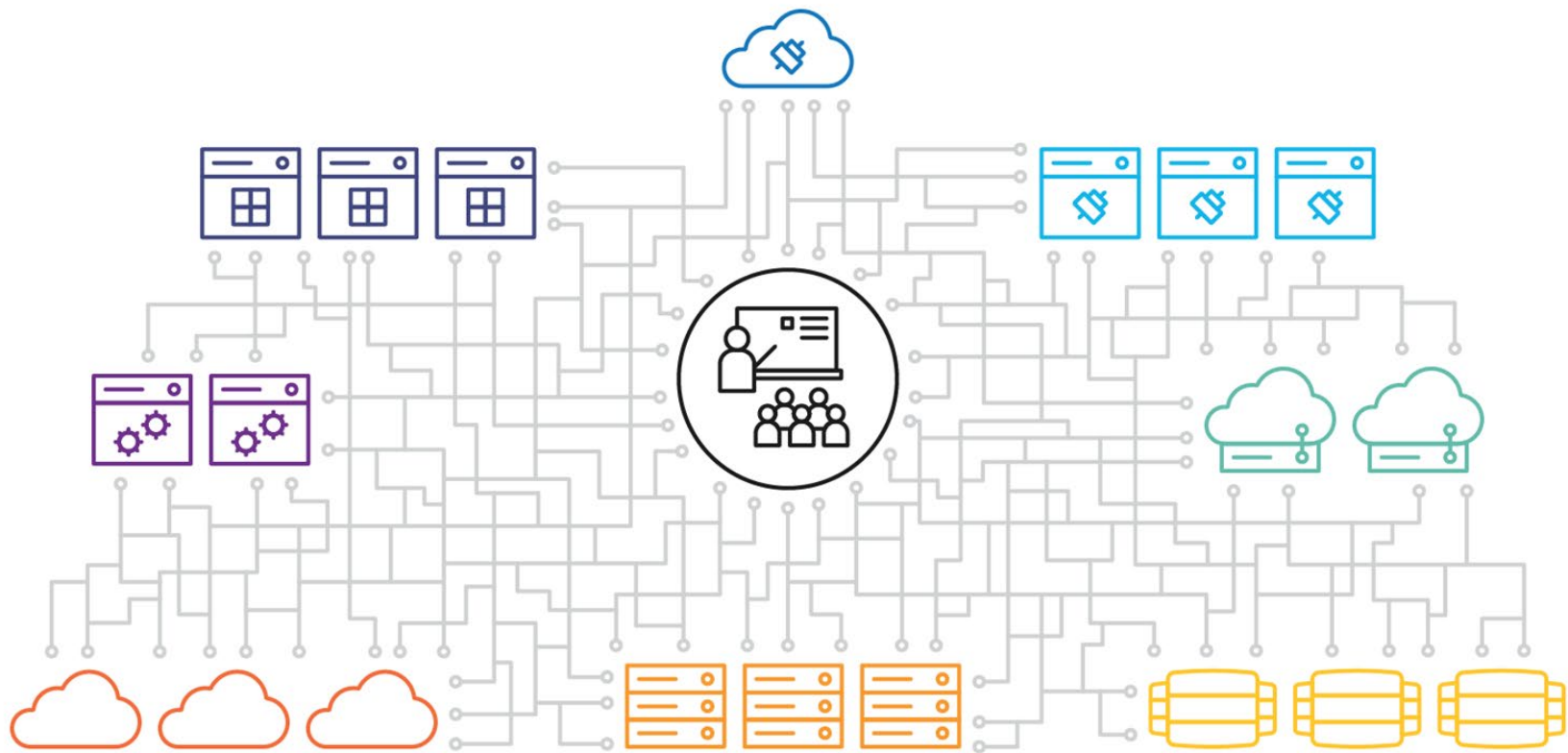
# Show me the Data!

## How To Give Your District Members The Data They've Been Asking For.

October 2022



**What are your current  
student data challenges?**



# data interoperability

— NOUN [ˈdæ-tuh, ɪn(t)ər, ˈæp(ə)rəˈbilədē/]

The seamless, secure, and controlled exchange of data between applications.

# Leveraging data interoperability will ...



Give you a complete view of each student




Allow data to move between systems securely and seamlessly—while protecting data privacy



Empower *you* to control your data, not a third party. You're not just subject to the baseline offerings vendors offer



Let you choose the best instructional tools available



**When your schools achieve  
data interoperability,  
you can solve other  
challenges more effectively.**

# Data Can Solve Big Challenges in Your Districts



## Ensure Equitable Access for Students

Understand, analyze and take supportive actions with data to uncover gaps in students' access and participation in your school's educational offerings.

## Engage Online Learners

Help instructional staff keep classroom learners engaged in their coursework.

## Address Chronic Absenteeism

Help students sooner with up-to-date and accurate attendance data.

## Strengthen Family Engagement

Connect family to the information and insights they need about their students.

## Harness Multiple Measures of Assessment

Help school staff identify if students are improving over time through multiple assessment measures.





---

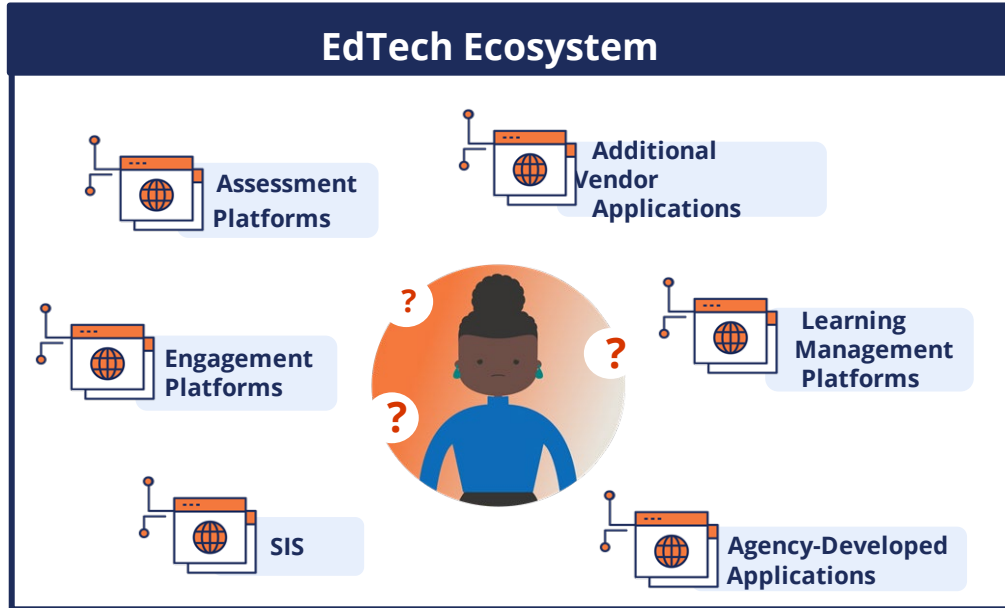
# Texas Education Exchange





# The Problem

# Educators work within fragmented systems, limiting their ability to support instruction



## ➔ Educator Impact

- ❌ Teachers and district staff are **required to enter, compile, and manipulate data manually**. This takes precious time from student instruction and could expose personal information.
- ❌ Manual entry and a lack of free movement of data **cause inaccuracies and duplicate records**.
- ❌ **There is no centralized location for data**.

# Fragmented systems and delayed connections heightened during COVID



Teachers and district staff are **required to find ways to connect with each student at home. Teachers enable more technology options to create e-learning.** This takes precious time from teachers and students to adjust to the learning curve.



Districts are forced to find ways to get **each student a laptop or tablet to connect at home**, or find the best ways to get those without means internet access. This creates a **costly problem for districts and leaders.**



More options made **further divisions for data connectivity.**



# The Solution

# The Texas Education Agency is modernizing data connections through its Texas Student Data System



## Student Information Systems



Ed-Fi ODS  
District #1



Ed-Fi ODS  
District #2



Ed-Fi ODS  
District #3

Texas Student Data System (TSDS) Infrastructure



## ➔ Educator Impact

Education data are included in a **single location** and **automatically transferred** to TEA, limiting time spent on reporting.

# The Exchange is developing a solution to facilitate interoperability across EdTech applications



## Texas Education Exchange Collaborative



Region 4 (Lead)



Region 10



Region 11



Region 13

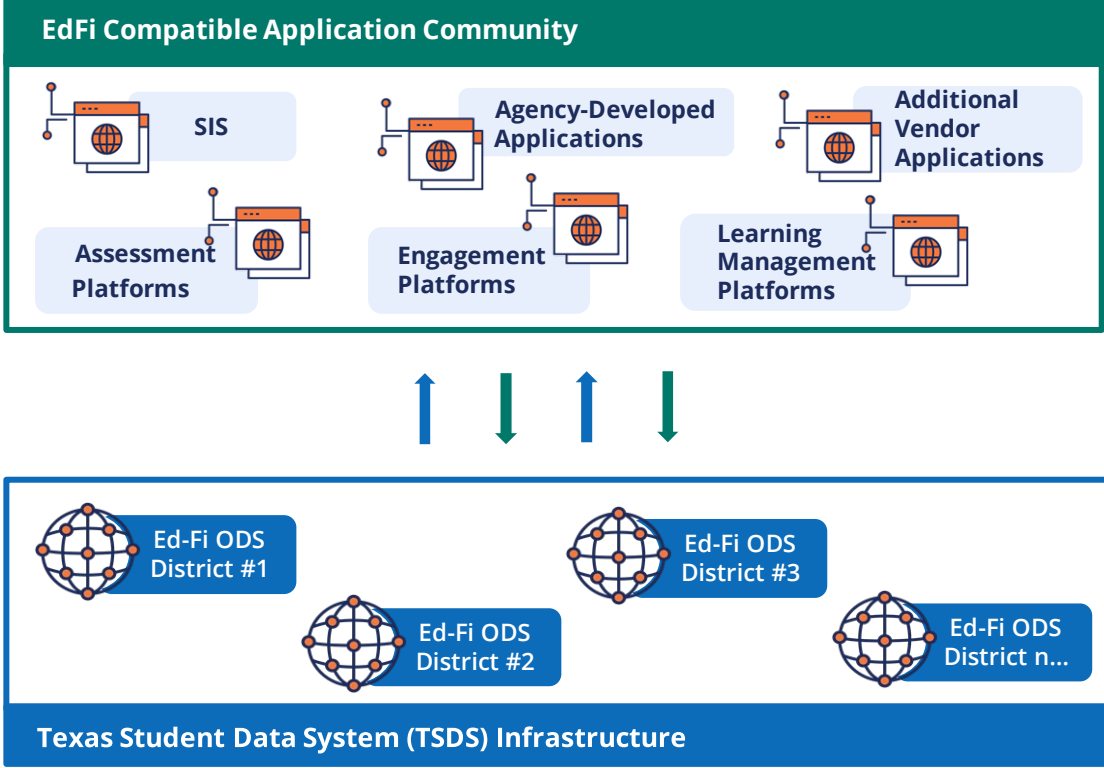


Region 20

## Funders and Partners



# The Exchange leverages Ed-Fi and TSDS modernizations to improve data interoperability





# The Exchange cultivates, integrates, and governs applications across vendors



## The Texas Education Exchange



District  
Implementation  
Support



Application  
Marketplace  
(For optional district use)

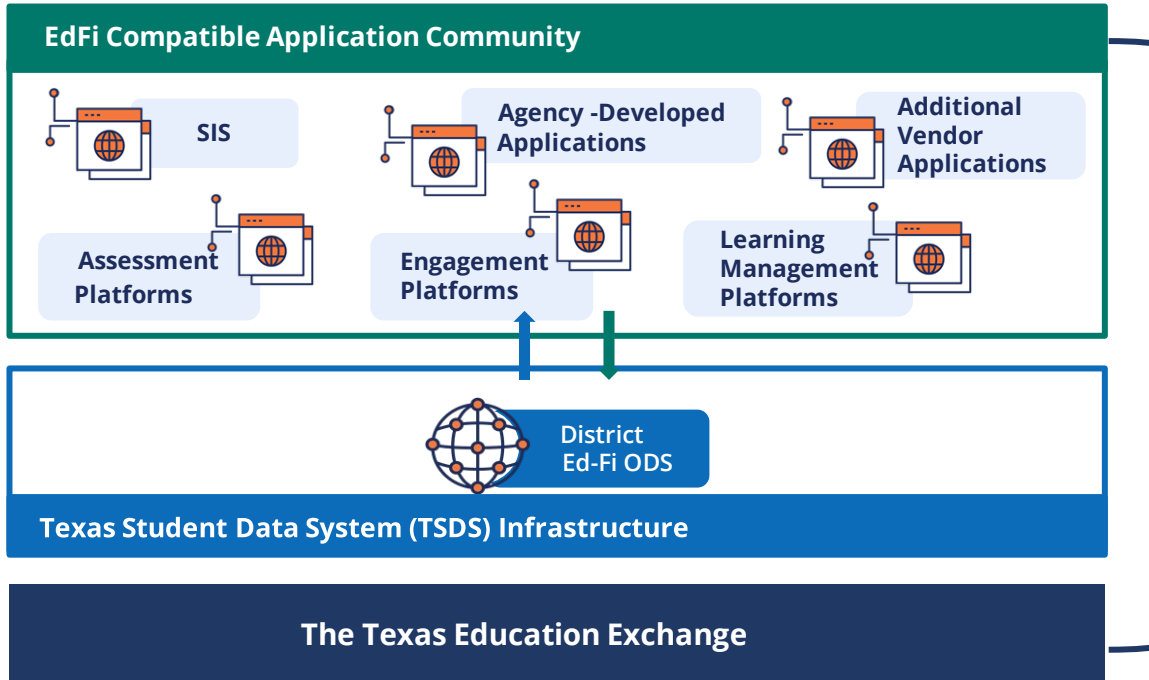


Vendor  
Integration



Exchange  
Developed  
Applications (TBD)

# The Exchange will help districts better use and make meaning of education data



- ✓ Removes need for manual data entry through **secure movement of data across all education data systems.**
- ✓ **Limits data entry errors** through free movement of data.
- ✓ Allows for **timely access to data.**
- ✓ Creates a **single location for data.**

# The Exchange allows interoperability among data systems, giving time back to educators



- ✓ Allows for **timely access to relevant data**.
- ✓ Provides educators a **snapshot of how students are performing** and what their needs may be in the classroom.
- ✓ With relevant data flowing between systems and timely information, educators can add time back to their day to **focus on student outcomes**.



# The Exchange provides opportunities for education service agencies to support districts in new & innovative ways



Enhance existing agency **products** by enabling easier use of their data



Build **applications** that connect to the districts EdFi ODS and **sell to the entire state**



Provide **wraparound services to districts**, helping them use connected applications

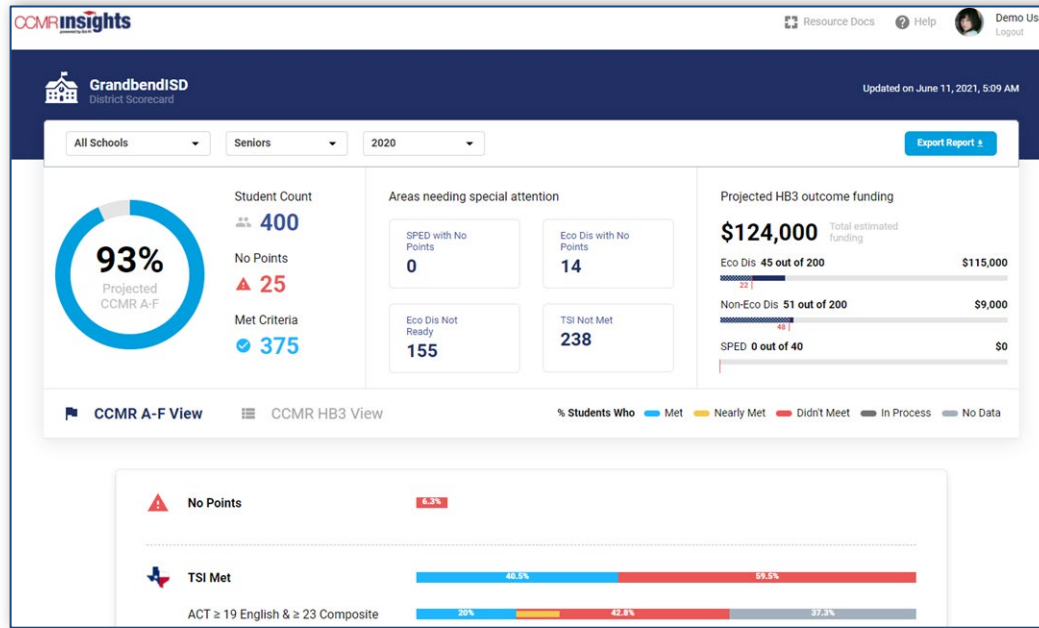


## Example App: CCMR Insights

# CCMRinsights

POWERED BY REGION 10 ESC AND ED-FI

*Do you know the score?*



- Forward-looking tool to
- Improve school accountability
  - Maximize Texas' CCMR Outcomes Bonus funding
  - Provide real time data to affect current year students
  - Use SIS data via Ed-Fi to increase data accuracy

# Sample of Potential Funding Gains

Distri	Pilo	District Name	Enrollment	% EcoDis	FY 2021 CCMR Outcomes Bonus 2020-2021 TEA Summary of Finances	Max Scenario: Assuming 100% Graduation and 100% College Readiness for Current 8th
			2020 TEA TAPR Report	2020 TEA TAPR Report		
'116903	Y	COMMERCE ISD	1,520	69%	\$9,000	\$468,000
'129901	Y	CRANDALL ISD	4,573	53%	\$97,000	\$1,373,000
'057907	Y	DUNCANVILLE ISD	12,416	80%	\$182,000	\$4,501,000
'043914	Y	WYLIE ISD	17,162	28%	\$850,000	\$4,299,000
'070905	Y	FERRIS ISD	2,675	81%	\$19,000	\$766,000
'057909	Y	GARLAND ISD	55,584	66%	\$3,094,000	\$16,474,000
'057910	Y	GRAND PRAIRIE ISD	29,196	76%	\$912,000	\$8,831,000
'057914	Y	MESQUITE ISD	39,775	78%	\$1,058,000	\$14,022,000
'057916	Y	RICHARDSON ISD	39,524	57%	\$2,297,000	\$11,051,000
'072903	Y	STEPHENVILLE ISD	3,834	50%	\$219,000	\$1,150,000
'070912	Y	WAXAHACHIE ISD	9,468	46%	\$609,000	\$2,687,000



## Takeaway: Return On Investment (“ROI”)

If you can move your District’s % by 1 or 2 points, it pays for the following:

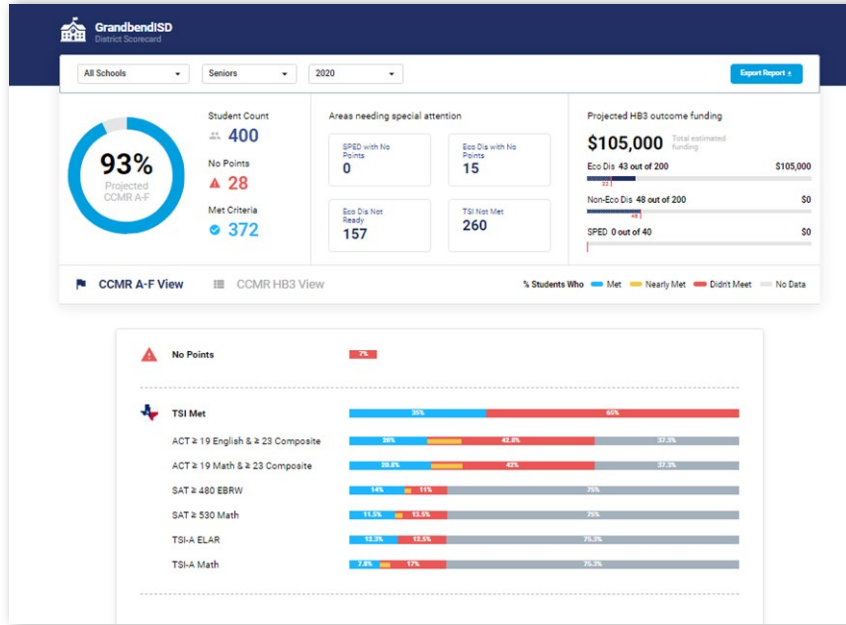
- CCMR Insights Dashboard
- A person to run CCMR
- Extra money for your District “forever”



# CCMRinsights

POWERED BY REGION 10 ESC AND ED-FI

## Exploring CCMR Insights Tool



Let's walk through it...

Demo link: <https://region10-ccmrdemo.region10.org/2020>

All Schools Seniors 2020



Student Count  
400  
No Points  
▲ 28  
Met Criteria  
✔ 372

Areas needing special attention

SPED with No Points  
0

Eco Dis with No Points  
15

Projected HB3 outcome funding

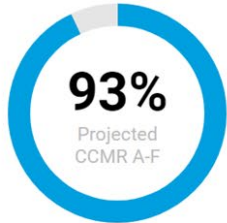
\$105,000 Total estimated funding  
Eco Dis 43 out of 200 \$105,000



All Schools

Seniors

2020



Student Count  
400  
No Points  
▲ 28  
Met Criteria  
✔ 372

Areas needing special attention

SPED with No Points  
0

Eco Dis with No Points  
15

Eco Dis Not Ready  
157

TSI Not Met  
260

Projected HB3 outcome funding

\$105,000 Total estimated funding

Eco Dis 43 out of 200 \$105,000

Non-Eco Dis 48 out of 200 \$0

SPED 0 out of 40 \$0

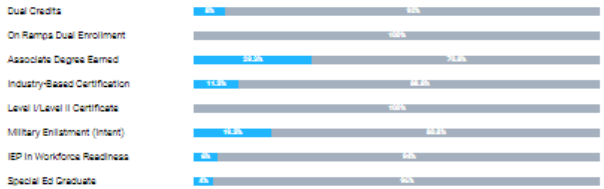
CCMR A-F View

CCMR HB3 View

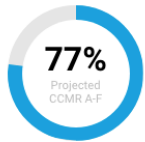
% Students Who Met Nearly Met Didn't Meet No Data

- No Points
- TBI Met
- ACT ≥ 19 English & ≥ 23 Comp
- ACT ≥ 19 Math & ≥ 23 Comp
- SAT ≥ 480 EBRW
- SAT ≥ 580 Math
- TSI-A ≥ 581 Reading
- TSI-A ≥ 580 Math
- College Prep Math Passed
- College Prep English Passed

AP or IB



All Schools



Total Seniors  
2035

No Points  
466

Met Criteria  
1569

Areas needing special attention

SPED with NO Points  
0

Eco Dis with NO Points  
213

Non Eco with NO Points  
238

TSI Met-Near Miss  
1333

Projected HB3 Outcome Funding

\$300,000

Eco Dis 176 out of 1018

132

Non Eco Dis 164 out of 1017

224

SPED 40 out of 200

CCMR A-F View

CCMR HB3 View

% Students Who Passed Nearly Missed Didn't Pass Didn't M

Not Ready



TSI Met



ACT ≥ 19 English & ≥ 23 Composite



ACT ≥ 19 Math & ≥ 23 Composite



SAT ≥ 480 EBRW



SAT ≥ 530 Math



TSI-A ≥ 351 Reading



TSI-A ≥ 350 Math



College Readiness

TSI Met



Associate Degree Earned



Enrollment (Confirmed by NSC)

Application Completed

Financial Aid

Meningitis

Career Readiness

Not Ready



TSI Met



ACT ≥ 19 English & ≥ 23 Composite



ACT ≥ 19 Math & ≥ 23 Composite



SAT ≥ 480 EBRW



SAT ≥ 530 Math



TSI-A ≥ 351 Reading



TSI-A ≥ 350 Math



College Readiness

TSI Met



Associate Degree Earned



Application Completed



Financial Aid



Meningitis Administered

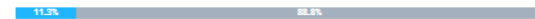


Career Readiness

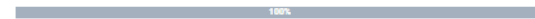
TSI Met



Industry-Based Certification



Level I/Level II Certificate



Military Readiness

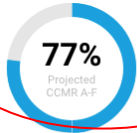
ASVAB Exam



Enlistment (Intent)



All Schools



Total Seniors  
2035

No Points  
466

Met Criteria  
1569

Areas needing special attention

SPED with NO Points  
0

Eco Dis with NO Points  
213

Non Eco with NO Points  
238

TSI Met-Near Miss  
1333

Projected HB3 Outcome Funding

\$300,000 Total estimated funding

Eco Dis 176 out of 1018

1321

Non-Eco Dis 164 out of 1017

2541

SPED 40 out of 200

CCMR A-F View

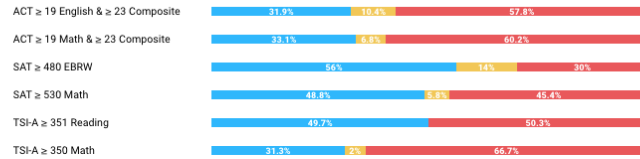
CCMR HB3 View

% Students Who Passed Nearly Missed Didn't Pass

No Points



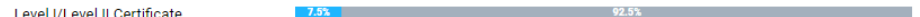
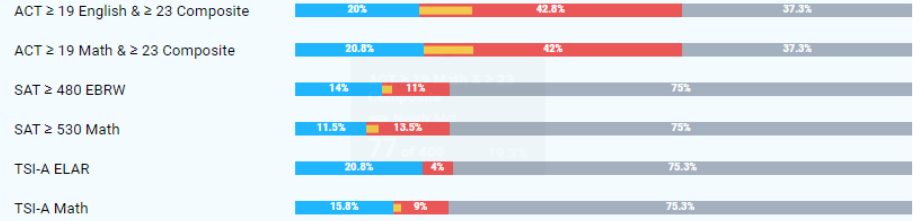
TSI Met



AP or IB



TSI Met



← Showing seniors of 2020 who are near miss in ACT English and ACT Composite

Reset Filters

Student's Name	TSDS ID	Local Student ID	Counselor	School	Student Level	A-F Points	TSI Met HB3	ACT Math/Composite	ACT English/Composite	SAT Math	EBRW
<input type="text" value="Search Student"/>	<input type="text" value="Search ID"/>	<input type="text" value="Local Student ID"/>	<input type="text" value="Counselor"/>	<input type="text" value="ALL"/>	<input type="text" value="SENIOR"/>	<input type="text" value="NO POINTS"/>	<input type="text" value="NOT MET"/>	<input type="text" value="NEARLY MET"/>	<input type="text" value="NEARLY MET"/>	<input type="text" value="ALL"/>	<input type="text" value="ALL"/>
Verena Chalet	110162	9162		Monarch High School	Senior	0	Not Met	19 (19) ▲	18 (19) ▲		
Cassy Wattpad	110169	9169		Monarch High School	Senior	0	Not Met	19 (19) ▲	18 (19) ▲		
Lorita Bulloch	110190	9190		Monarch High School	Senior	0	Not Met	21 (20) ▲	18 (20) ▲		
Houston Buhler	110137	9137		Monarch High School	Senior	0	Not Met	19 (20) ▲	20 (20) ▲	427	229
Raven Melli	110197	9197		Monarch High School	Senior	0	Not Met	24 (22) ▲	20 (22) ▲		
Brittany Valez	110170	9170		Monarch High School	Senior	0	Not Met	18 (20) ▲	21 (20) ▲		

Showing 1 to 6 of 6 Students

Prev

Next

Page 1 of 1

10 rows

Export as CSV



# New features

- Student Profile view

Student's Name	TSDS ID	Local Student ID	Counselor	School	Student Level
Shelley Gylenhaal	110227	9227		Monarch High School	Senior
Vita Boneparte	110224	9224		Monarch High School	Senior
Floria Brookshire	110225	9225		Monarch High School	Senior
Elise Ditko	110233	9233		Monarch High School	Senior
Maple Merri	110171	9171		Monarch High School	Senior
Joan Haugen	110263	9263		Monarch High School	Senior
Bethann Picardo	110228	9228		Monarch High School	Senior
Carson Andrey	110289	9289		Monarch High School	Senior
Brittaney Valez	110170	9170		Monarch High School	Senior
Noelle Arriaga	110249	9249		Monarch High School	Senior

Showing 1 to 10 of 28 Students

Page

Independent School District

← Regina Dowler ID 789271
Export PDF

TSDS 327889127912 • Monarch High School • Counselor Ryan Calzoni • Female • American Indian • South America

HB3 Ready  
● Ready

A-F Points  
 2

TSI Met  
● Met

Eco Dis  
 No

SPED  
 Yes

EL Status  
 Yes

9th Grade GPA  
 2.5

Criteria Met
  Near Miss
  Not Ready
  No Data

### TSI Met

ACT English (Composite) 29 (28)

ACT Math (Composite) 30 (28)

SAT EBRW 433

SAT Math 395

TSI-A ELAR 303

TSI-A Math 236

College Prep Math --

College Prep Reading --

### HB3 Readiness

**College Readiness** ● Not Ready

TSI Met ● Met

Associate Degree Earned --

Application Completed Yes

Financial Aid --

Meningitis --

---

**Career Readiness** ● Not Ready

TSI Met ● Met

Industry-Based Certification No

Level I/Level II Certificate No

---

**Military Readiness** ● Ready

ASVAB Exam Yes

Enlistment (intent) Yes

### CCMR A-F

TSI Met ● Met

AP ●

IB ●

Dual Credits ▲

On Ramps Dual Enrollment ▲

Associate Degree Earned ●

Industry-Based Certification ●

Level I/Level II Certificate ●

Military Enlistment (Intent) ●

IEP in Workforce Readiness --

Special Ed Graduate --

### AP Courses

Course	Score	Date
AP Biology	3	Sept 11, 2020
AP Psychology	4	Sept 1, 2020
AP Statistics	3	Sept 1, 2020

### Dual Credit Courses

Course	Grade	No. for credit earned
English	A	3
Communication	A	3
Science	B	3
Arts	B	3

### IB Courses

Course	Score	Date
English literature	4	Sept 17, 2020
History	5	Sept 15, 2020





# But what will become of Excel?



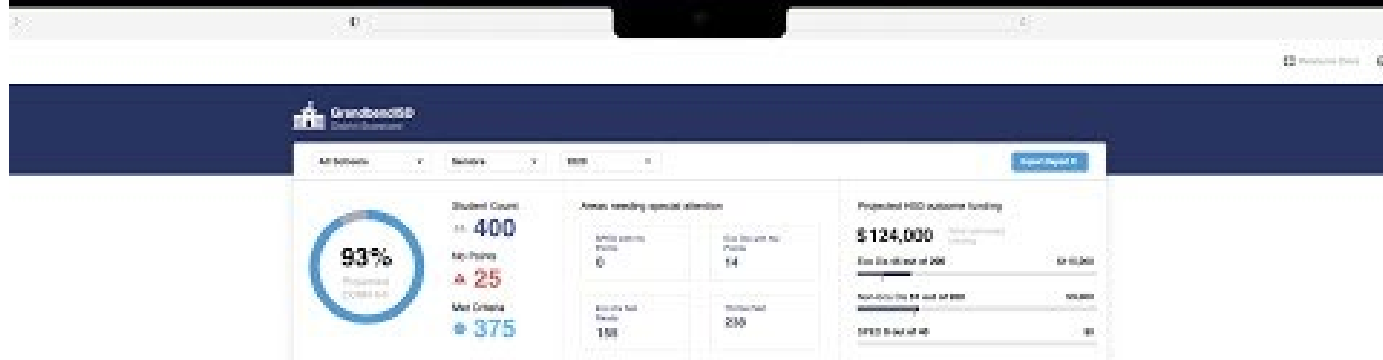
*Typically LEAs use Microsoft Excel for this, but do you want your CCMR people to be programmers...*

*.. Or helping students?*

# Help students faster with CCMR Insights

Learn more

[bit.ly/CCMR-Insights](https://bit.ly/CCMR-Insights)



# Comments from Pilot LEAs:

## How is CCMR Insights improving your staff's ability to help students be CCMR ready?

Mesquite ISD	Staff is able to see exactly where students are on their journey and where they might be missing in other areas.
Grand Prairie ISD	It provides the insight to know where our students are being successful and not and allowing us to see the gaps our students are experiencing to fill.
Richardson ISD	Having the data available in one place makes it much easier for our staff to track student's progress.
Waxahachie ISD	Easy access so data can be pulled quickly to help support making sure all our students have met CCMR criteria.
Commerce ISD	I am able to see individual progress and what checkmarks they have accomplished.
Crowley ISD	It is easy access and at-a-glance
Weatherford ISD	We have rolled out the dashboard and trained our counselors how to look at students within their alpha. Counselors are able to meet with students who have no points and counsel them appropriately.

# What you get

*Not just the software!*

- Friendly Region 10 ESC support! 😊
- Model rollout plans & training materials for your staff based on pilot experience
- Expert technical support for SIS data mapping & assessment upload
- Experience for next gen PEIMS (23-24)

# Compatible Student Information Systems

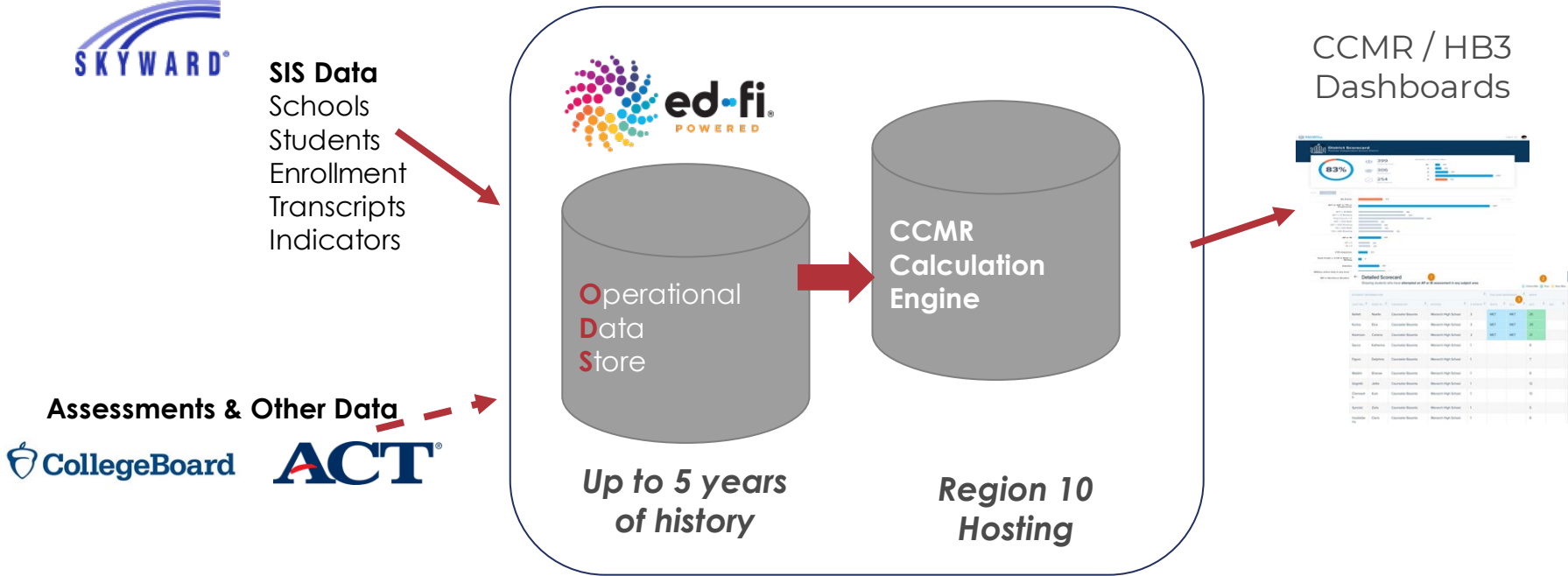
Districts that use the following [student information systems](#) (SIS) can implement more quickly:



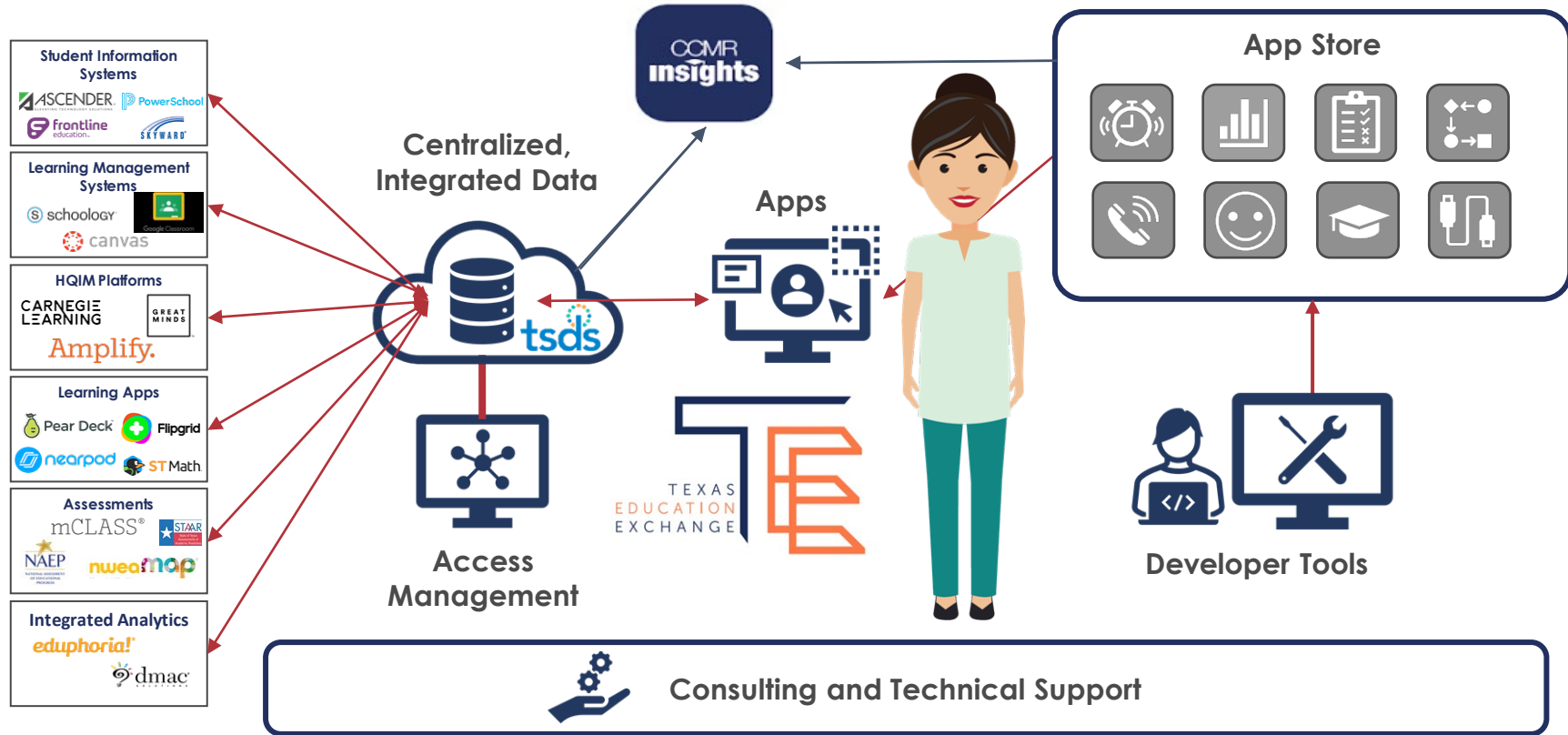
**With TEA/Exchange Next-Gen ODS3.x all systems will be compatible by 24-25**

# High-Level Architecture - Today

## Ed-Fi® Data Collaboration



# The Future: Statewide Data Infrastructure





# Next Steps To Data Interoperability

1. Decide that data interoperability is important for your educators and students. Start with a specific problem you are trying to solve. Get a buddy.
2. Connect with us Ed-Fi at [www.ed-fi.org](http://www.ed-fi.org) and create an account.
3. Start with the [Ed-Fi Academy](#) 101 course
4. Determine your implementation path – DIY, do it in a group (collaborative), or do it with a technical partner
5. Log into [Ed-Fi Tech Docs](#) and explore the resources
6. Check out the [Starter Kits](#) and go thru the step-by-step instructions.
7. Connect with us on [Slack](#)
8. Join us at the [Ed-Fi Summit](#) & [AESA Conference](#)
9. Schedule time with me to discuss your support needs! [Lyria.Zeh@dell.org](mailto:Lyria.Zeh@dell.org)

# Next Steps To Data Interoperability

Join us at AESA Annual Conference in Atlanta!  
*Friday, December 2 at 8:00am ET*





**SAVE *the* DATE**

# Summit 2022

WHEN:

**November 6<sup>th</sup>- 9<sup>th</sup>, 2022**

WHERE:

**Hyatt Regency Austin**  
Austin, Texas